

GOVE TOWER APARTMENTS

Mirror Systems

GOLF TOWER APARTMENTS
SAN ISIDORO, LIMA, PERU
competition 2009
1/2

THE FIGURE OF SERRATION ENSUES

- 1 THE INTERIOR IS A COLLECTION OF VARIOUSLY SIZED AND DISCONTINUOUS SPATIAL UNITS.
- 2 THE INTERNAL DISCONTINUITY IS MATERIALIZED BY THE PLANAR HARDNESS OF GLASS PARTITIONS. TRANSPARENCY IS UTILISED TO ESTABLISH DIVISIONS. IN SOME CASES GLASS PARTITIONS ARE DOUBBLE GLAZED AND TOUGHENED TO STRESS SEPARATION.
- 3 OPENINGS IN GLAZED PARTITIONS ARE HINGED NOT SLIDING. THERE ARE NO SEAMLESS TRANSITIONS BETWEEN SPACES. HINGED DOORS BETWEEN SPACES ARE OFFSET.
- 4 THE GREATEST TRANSPARENCY IS ACHIEVED ALONG OBLIQUE LINES. LUCIDITY IS NEVER CENTERED.
- 5 NO SIGNIFICANT ATTEMPT HAS BEEN MADE TO ARTICULATE THE GLASS BLOCK EXTERIOR.
- 6 GLASS BLOCKS ARE INSERTED INTO BALCONY FLOORS BEHIND THE GLASS BLOCK WALLS. THE DISARTICULATION OF THE GLASS BLOCK ELEVATION IS THEREFORE DOUBLE, TRIPLED, QUADRUPLED.
- 7 PLASTIC AND GLOSSY FINISHES ARE REFINED WITH TACTILE CARPETS.
- 8 WHEN ALIENS GLIDE THROUGH LIMA THE FIGURE OF SERRATION ENSUES.
- 9 APPLIED MOTIFS TO THE GLASS BLOCKS ARE OF THE APARTMENT PLAN REFLECTED INTO THE TAUTOLOGICAL CITY OF ORDER AND HEIRARCHY. (NOT SHOWN)



GOVE TOWER APARTMENTS

Mirror Systems

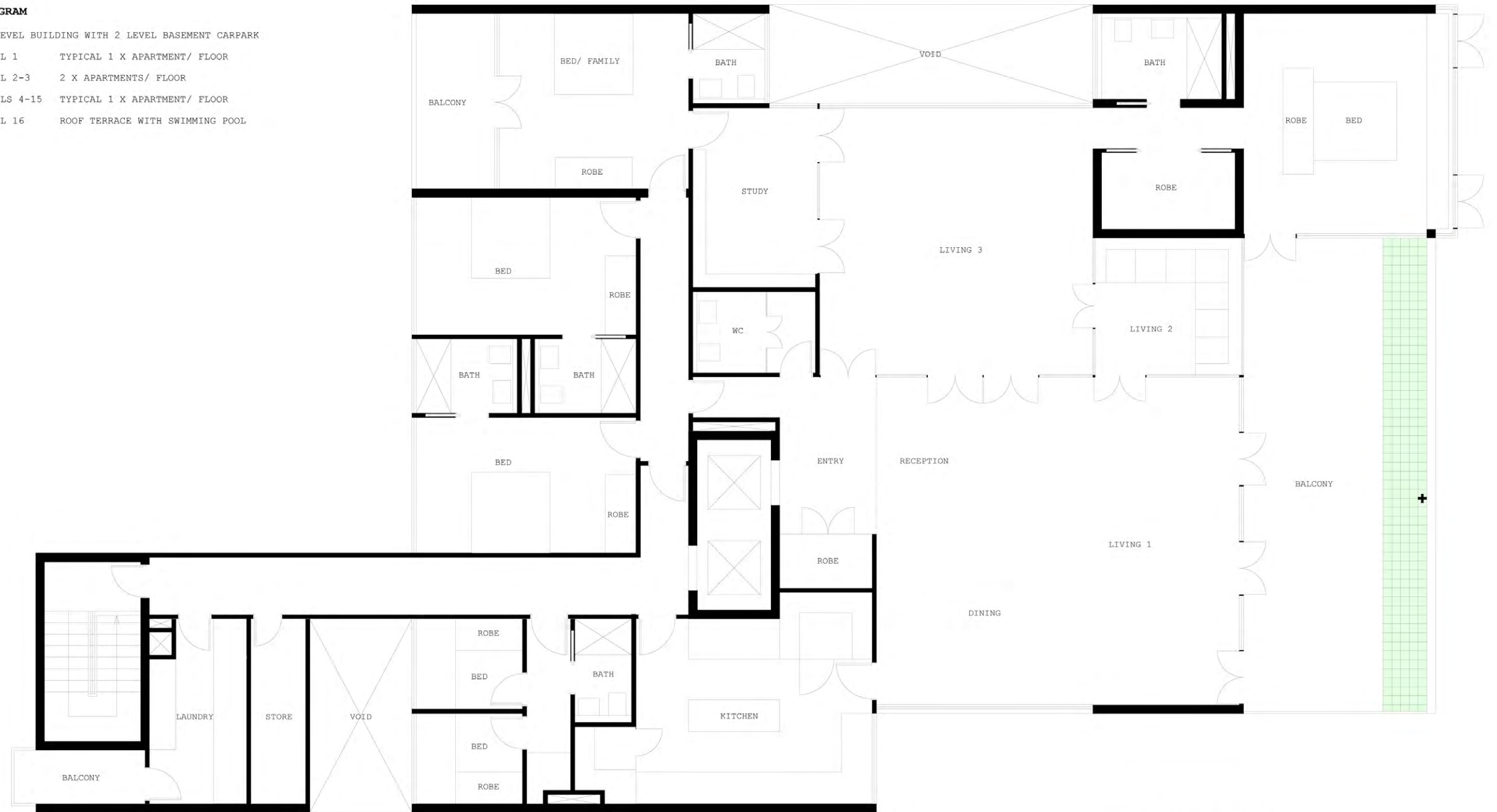


GOLF COURSE VIEW FROM MAIN BALCONY

GOLF TOWER APARTMENTS
SAN ISIDORO, LIMA, PERU
competition 2009
2/2

PROGRAM

- 6 LEVEL BUILDING WITH 2 LEVEL BASEMENT CARPARK
- LEVEL 1 TYPICAL 1 X APARTMENT/ FLOOR
- LEVEL 2-3 2 X APARTMENTS/ FLOOR
- LEVELS 4-15 TYPICAL 1 X APARTMENT/ FLOOR
- LEVEL 16 ROOF TERRACE WITH SWIMMING POOL



TYPICAL 1 X APARTMENT/ FLOOR

1M 2M 5M 10M