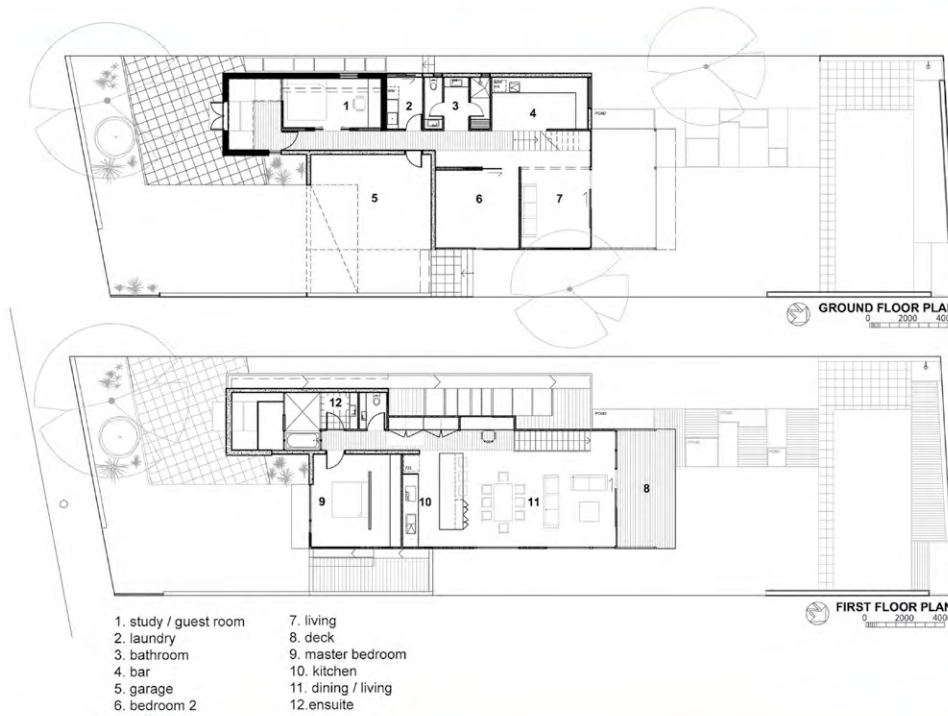
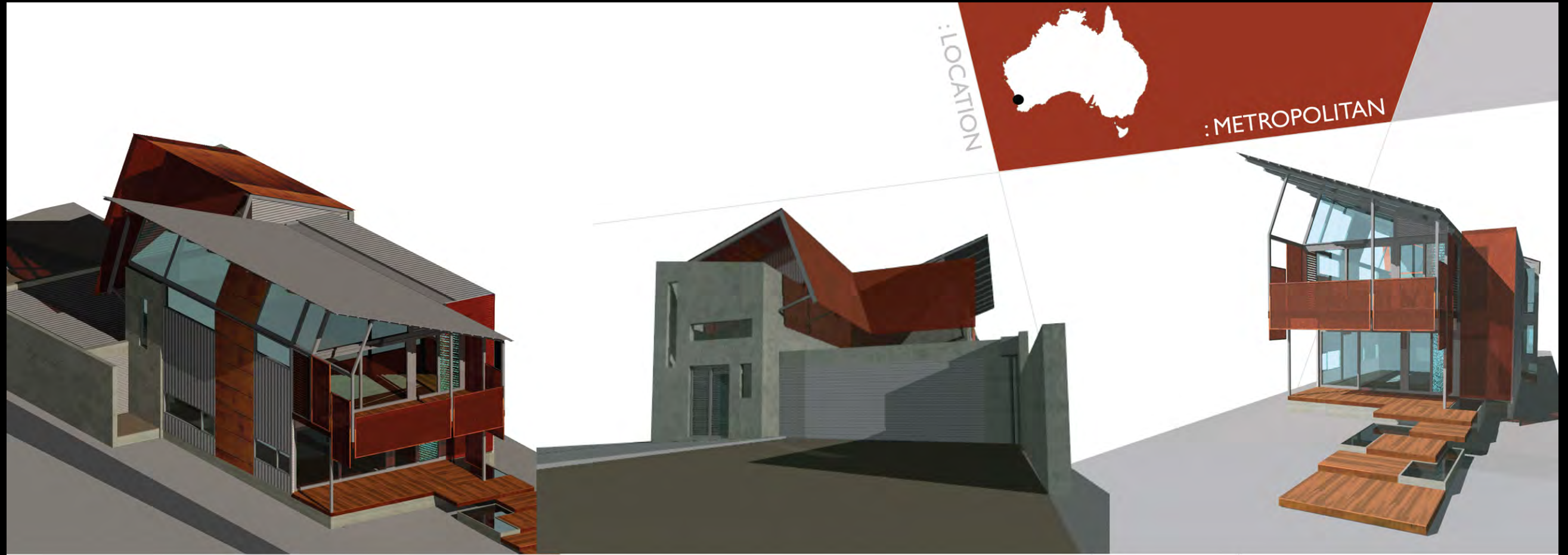


GILES RESIDENCE

Paradigm Architects



Presented with a small block with located on a major traffic route the proposal examines the duality of the site noise and setback constraints at one end of site with access to north light and views towards the river and city beyond. The house presents a 'fortified' front to the street utilising raw form finish concrete panel walls and defines an entry courtyard. A perforated 'Corten' screen drapes over the roof and exposed fenestration to ameliorate noise and direct eastern sun to the upper floor. To the rear lightweight construction with corrugated steel cladding utilises large amounts of glazing opens the residence up to the view and light permitting access to rear deck structures. On the lower floor the deck steps down on a series of timber platforms and water bodies to a swimming pool at the rear of the site. Living areas located on the upper level are flooded with natural light with fenestration oriented to capture available cooling breezes while solar access is permitted to the burnished concrete slab. Perforated 'Corten' form the balustrading and privacy screens to the rear decks and provide a continuity to the materials/ finishes palette.

:giles residence